



MONTHLY MEMBERSHIP PROGRESS REPORT

District 11 E2

Results as of: 8/31/2015

GMT: THOMAS MATNEY

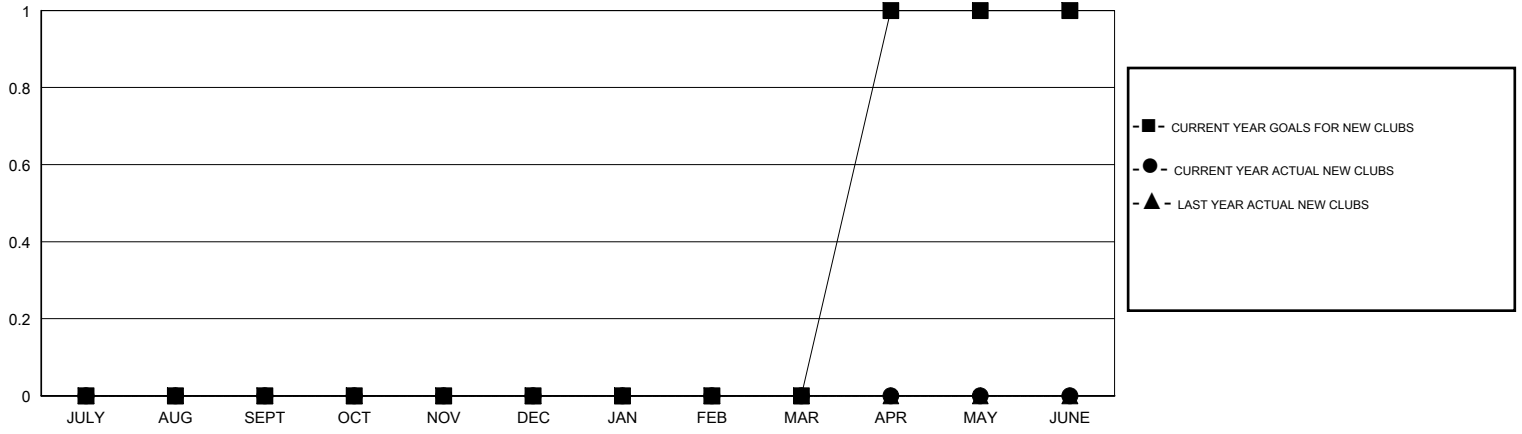
LOCATION MICHIGAN

GMT CA 1

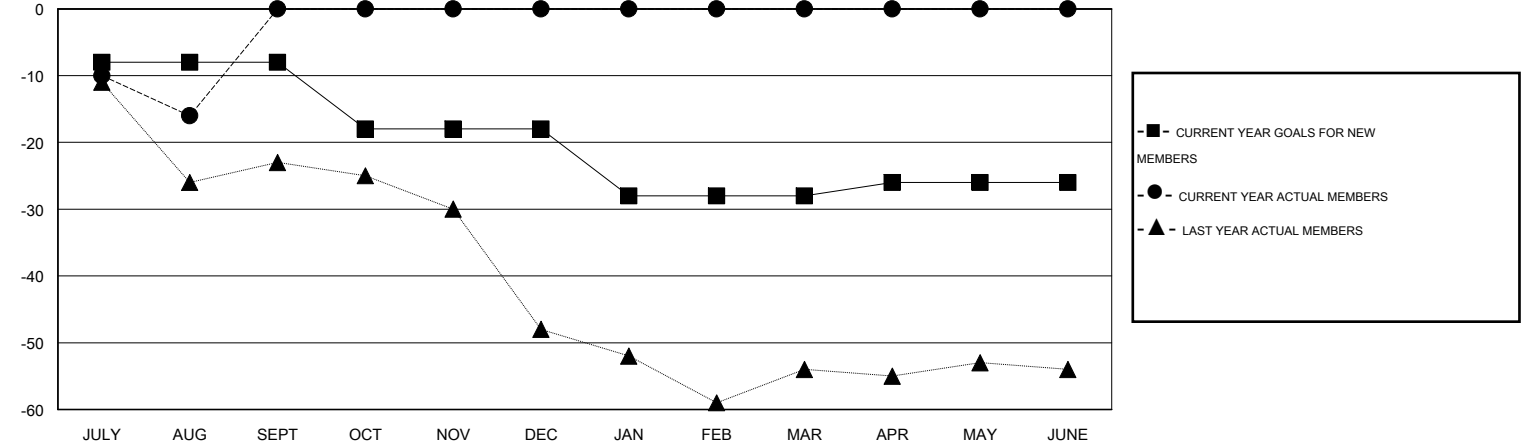
Clubs				
RESULTS FOR 2015-2016				
QUARTER	NEW CLUB GOAL	NEW CLUBS	DROPPED CLUBS	NET GAIN/LOSS
JULY/AUG/SEPT	0	0	0	0
OCT/NOV/DEC	0	0	0	0
JAN/FEB/MAR	0	0	0	0
APR/MAY/JUNE	1	0	0	0

Members				
RESULTS FOR 2015-2016				
QUARTER	NEW MEMBER GOAL	CHARTER AND NEW MEMBERS ADDED	DROPPED MEMBERS	NET GAIN/LOSS
JULY/AUG/SEPT	-8	16	32	-16
OCT/NOV/DEC	-10	0	0	0
JAN/FEB/MAR	-10	0	0	0
APR/MAY/JUNE	2	0	0	0

GOALS AND ACTUAL NEW CLUBS CUMULATIVE



GOALS AND ACTUAL MEMBERS CUMULATIVE



DROPPED CLUBS: 0	10 CLUBS OF 36 ADDED 1 OR MORE NEW MEMBERS	<u>GENDER DISTRIBUTION</u>
		MALE 815 (76.10%)
		FEMALE 256 (23.90%)
<u>DROPPED MEMBERS</u>	CLICK HERE FOR HEALTH ASSESSMENT DATA	FAMILY UNIT MEMBERS 149
DECEASED 3		HEAD OF HOUSEHOLD 74
CLUB CANCELLED 0		NON-HEAD OF HOUSEHOLD 75
OTHER 29		
TOTAL 32		